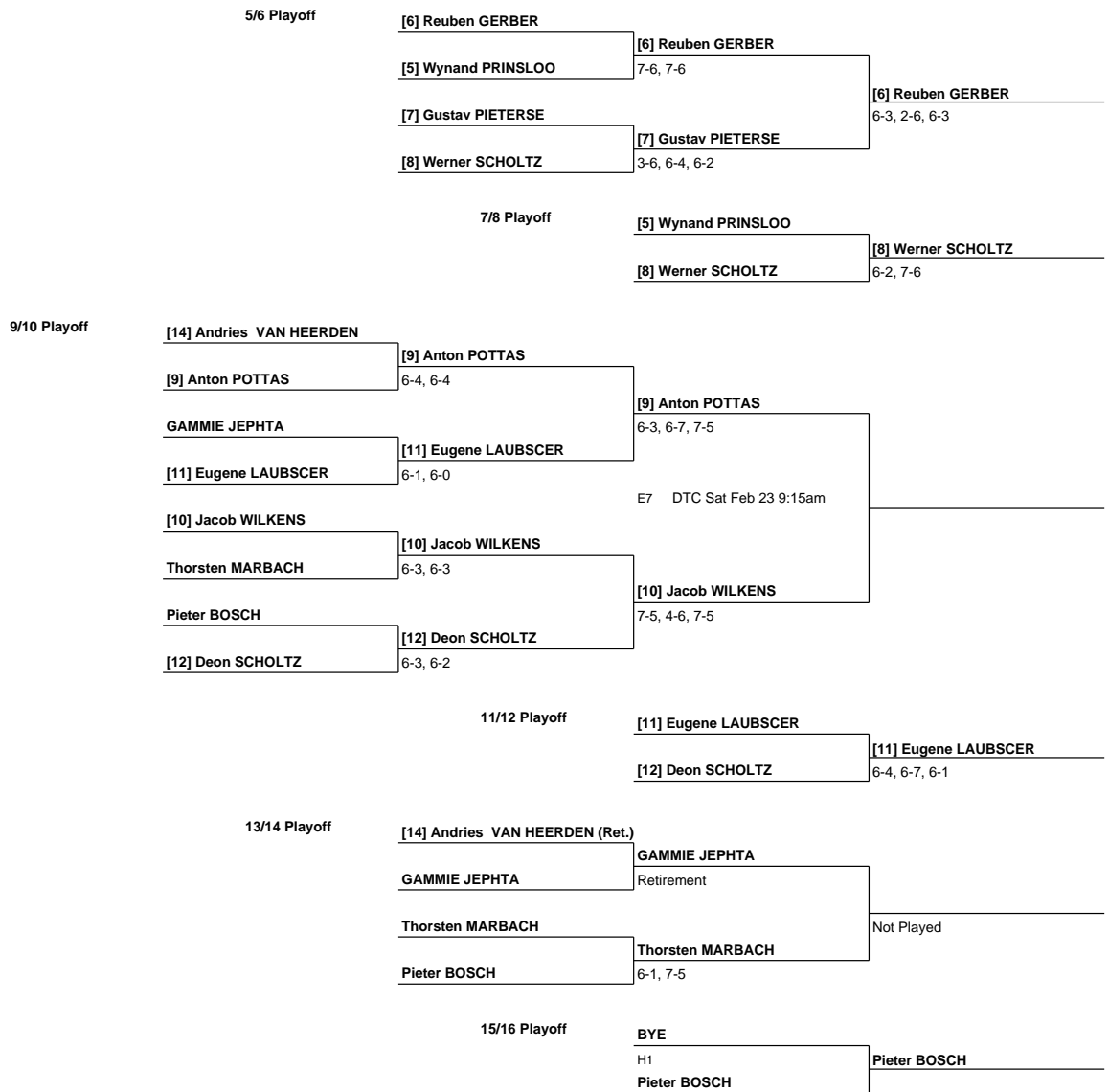


Main Draw

[1] Diederik PRINSLOO	[1] Diederik PRINSLOO		
Janco VAN HEERDEN	6-0, 6-0	[1] Diederik PRINSLOO	
[14] Andries VAN HEERDEN		6-0, 6-0	
Sarel JANSE V RENSBURG	[14] Andries VAN HEERDEN		
	4-6, 6-3, 6-2		
[9] Anton POTTAS		[1] Diederik PRINSLOO	
Werner GRUNDLING	[9] Anton POTTAS	6-4, 6-4	
	6-0, 6-1		
Robert ROODE		[6] Reuben GERBER	
[6] Reuben GERBER	[6] Reuben GERBER	6-4, 6-3	
	6-0, 6-0		
[3] JC LE ROUX		[1] Diederik PRINSLOO	
Wim GRIEBENOW	[3] JC LE ROUX	6-2, 5-7, 6-3	
	6-1, 6-0		
GAMMIE JEPHTA		[3] JC LE ROUX	
[13] Michael BEVERLEY (Ret.)	GAMMIE JEPHTA	6-2, 6-0	
	Retirement		
[11] Eugene LAUBSCER		[3] JC LE ROUX	
Werner LEONHARDT	[11] Eugene LAUBSCER	3-6, 6-3, 6-2	
	6-1, 6-1		
Allaudin KARRIEM		[5] Wynand PRINSLOO	
[5] Wynand PRINSLOO	[5] Wynand PRINSLOO	6-3, 6-0	
	6-3, 6-2		
[7] Gustav PIETERSE		[1] Diederik PRINSLOO	
Fanie VISSER	[7] Gustav PIETERSE	6-3, 6-2	
	6-1, 6-0		
[10] Jacob WILKENS		[7] Gustav PIETERSE	
JP JOUBERT	[10] Jacob WILKENS	6-3, 1-6, 6-4	
	6-4, 6-2		
Thorsten MARBACH		[4] Fanie JANSE VAN RENSBURG	
[15] Erich JORDAAN	Thorsten MARBACH	6-0, 6-1	
	7-5, 7-5		
Johan BASSON		[4] Fanie JANSE VAN RENSBURG	
[4] Fanie JANSE VAN RENSBURG	[4] Fanie JANSE VAN RENSBURG	6-0, 6-0	
	Walkover		
[8] Werner SCHOLTZ		[4] Fanie JANSE VAN RENSBURG	
andre SCHOLTZ	[8] Werner SCHOLTZ	6-4, 6-3	
	6-0, 6-0		
Pieter BOSCH		[8] Werner SCHOLTZ	
Ruan BADENHORST	Pieter BOSCH	6-4, 6-4	
	6-0, 6-0		
[12] Deon SCHOLTZ		[2] Arno SCHOLTZ	
Das SANDIPAN	[12] Deon SCHOLTZ	6-3, 6-3	
	6-0, 6-0		
Janco VOSLOO		[2] Arno SCHOLTZ	
[2] Arno SCHOLTZ	[2] Arno SCHOLTZ	6-2, 6-1	
	6-0, 6-0		

3/4 Playoff

[3] JC LE ROUX	
[2] Arno SCHOLTZ	
	[2] Arno SCHOLTZ
	6-0, 6-0



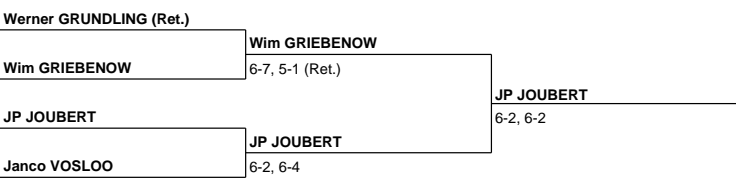
17/18 Playoff



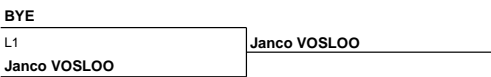
19/20 Playoff



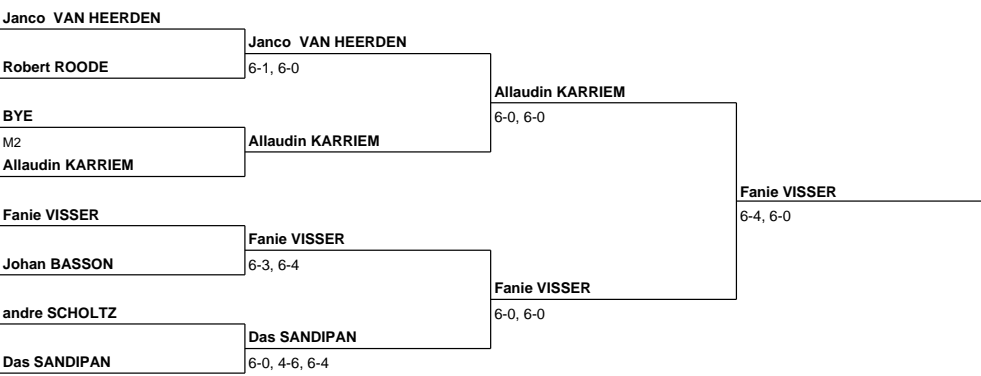
21/22 Playoff



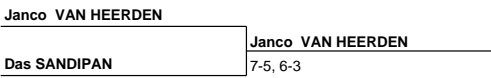
23/24 Playoff



25/26 Playoff



27/28 Playoff



29/30 Playoff

Robert ROODE		
O1	Robert ROODE	
BYE		
Johan BASSON (Ret.)		Robert ROODE
	andre SCHOLTZ	7-5, 6-4
andre SCHOLTZ	Retirement	

31/32 Playoff

BYE	
P1	
BYE	